



**SPAW**  
SOUTH PACIFIC ANIMAL WELFARE



**ANNUAL REPORT**  
**2025**

# IMPROVING THE LIVES OF SOUTH PACIFIC ANIMALS

**South Pacific Animal Welfare (SPAW) provides free veterinary care to animals living in South Pacific Island communities.**

SPAW operates regular field clinics staffed by trained veterinary professionals on islands where there is no, or limited access to, regular veterinary care.

We are often the only lifeline to medical care for those animals who are injured or sick. Our charity is a major contributor to reducing the stray dog and cat populations through our regular desexing clinics.

It is our hope that by being present and fostering positive animal welfare activities, that over time people will display higher levels of compassion for all animals.

## WHAT WE DO



**Desexing**



**Surgery**



**Education**



**Health checks**



**Parasite control**



**Volunteer experiences**



**Vaccinations**



**Livestock care**



**Training and development**

# CONTENTS

---

<a href="#">A word from our Founder</a>	1
<a href="#">A word from our Chair</a>	2
<a href="#">2025 in review</a>	3
<a href="#">Our clinics</a>	4
<a href="#">Tele-veterinary medicine</a>	6
<a href="#">MAFF and SPAW collaboration</a>	6
<a href="#">Fundraising and partnerships</a>	7
<a href="#">Our partners in 2025</a>	7
<a href="#">Product donors</a>	8
<a href="#">Heartwarming high tea fundraiser in Tauranga</a>	8
<a href="#">Volunteer stories</a>	9
<a href="#">Farewell Oxy</a>	10
<a href="#">A special patient</a>	10
<a href="#">A second chance on three legs</a>	11
<a href="#">A story of care, commitment and healing</a>	11
<a href="#">Our people in 2025</a>	12
<a href="#">Our Trustees in 2025</a>	13
<a href="#">The year ahead</a>	14
<a href="#">Celebrating 15 years</a>	15
<a href="#">Honorary Lifetime Volunteers 2025</a>	16
<a href="#">How you can help</a>	17

# A WORD FROM OUR FOUNDER



As we have now farewelled our 15th year, I can say that I'm in awe of SPAW's continued resilience. Fifteen years ago, I was a lot younger and, truthfully, a little naïve about what it would take to build and sustain a charity like SPAW. We've weathered many highs and plenty of lows, but I remain deeply proud and optimistic about the future for animals in our region.

SPAW continues to make a meaningful difference to the lives of thousands of animals across the South Pacific. We have the absolute best people on our Board, generous people who are committed to seeing our services continue. The last two years have seen us focus on where our impact is most beneficial – Tongatapu and Vava'u in the Kingdom of Tonga, and Upolu and Savai'i in Samoa. Fiji, the Cook Islands and Niue now all have sustainable veterinary programmes in their own right, and so our impact in Tonga and Samoa is again our focus for 2026 with seven field clinics scheduled.

We're still a grassroots organisation at heart, but we've evolved. Our systems and processes are stronger, and SPAW has become a recognised name in animal welfare internationally.

Volunteers travel from all corners of the globe to be part of our programme - not for prestige, but for purpose. SPAW offers something rare: a space where animals receive free care regardless of their family's financial situation, and where volunteers reconnect with communities that have touched

their lives. Many return year after year, driven by compassion and the spirit of service.

In 2025, we delivered seven field clinics - an extraordinary achievement. These clinics require immense planning and dedication from our vets, vet nurses and admin team.

As we look ahead to 2026, my heart is full of gratitude. To our vet and vet nurse volunteers, our wonderfully gifted Board, our generous donors and Impact Partners, on island partners, our Premium Partner of 15 years **Zoetis New Zealand**, and the many industry businesses who support us with gifted products - thank you. You keep SPAW's mission alive and thriving.

It's been several years since I've been on island. After many years of living and working across various Pacific nations, in recent years I've taken on more of a behind-the-scenes admin role with SPAW. But in 2026 I will return as a volunteer on the Samoa clinic in September. I'm eager to reconnect with the incredible people who work alongside us, delivering this unique form of aid to animals with such dedication and care. I truly can't wait.

SPAW was built on community, on giving more than we thought possible, and on the belief that animals in Pacific Island communities deserve better. That belief still drives us. And it always will.

**Karen Schade**  
Founder





## A WORD FROM OUR CHAIR

The 2025 year was one of extraordinary commitment, growth and community partnership. As an organisation that receives no government funding and relies entirely on the generosity of donors and volunteers, SPAW continues to deliver high quality veterinary care where it is needed most. This year's field clinics across Tonga and Samoa exemplify what can be achieved when compassion, skill and collaboration come together with purpose.

Our first clinic of the year took place on Upolu, Samoa. The clinic, delivered in close partnership with Animal Protection Society Samoa and the Aleipata Women's Group, was a striking success. We look forward to returning to both Upolu and Savai'i in June and September of this year.

In the Kingdom of Tonga, we ran four clinics, which included the third annual Angela Glover Memorial Clinic on Tongatapu – this clinic honours the legacy of our dear friend and colleague Angela with the support of her family. Our Vava'u clinic set a new benchmark for SPAW, achieving the highest number of consults, surgeries and treatments ever recorded in a single week on the island group.

Across all seven field clinics, SPAW volunteers demonstrated resilience and unwavering dedication. Our island partners – the Ministry of Agriculture, Food and Forests (MAFF), Tonga Animal Welfare Society (TAWS), Animal Protection Society (APS) Samoa, Host a Vet Vava'u and many local community groups – played an essential role in ensuring each clinic's success.

As we look ahead, SPAW remains committed to strengthening partnerships, expanding our reach and continuing to honour the legacy of those who have shaped our journey. Thank you to everyone who contributed to another impactful year – your belief in our mission makes this work possible.



**Dr Geoff Neal BVSc**  
Chair

# 2025 IN REVIEW

**938** Dogs desexed



**1,535**

General medical cases



**55**

Livestock cases



**143** Cats desexed

**1,410**

PARVOVIRUS VACCINES



**313**

Clinic hours total



**17**  
ADDITIONAL  
SURGERIES



**6,286**

Parasite treatments



**44**

Volunteer  
flights



**1,162**

Vet nurse  
volunteer hours



**1,173.5**

Vet volunteer hours



<sup>NZ</sup> **\$15,000**

TELE-MEDICINE SERVICES  
(300 EMAILS AND PHONE CALLS)

**560**

Admin  
volunteer hours



**2,686**

Total animals treated



<sup>NZ</sup> **\$1,297,000**

VALUE OF SERVICES IN 2025

# OUR CLINICS

## UPOLU, SAMOA

17-21 MARCH 2025

Clinic value: NZ\$162,000

Animals treated: 206

Animal Protection Society (APS) Samoa and the Aleipata Women's Group had undertaken extensive preparation and community outreach ahead of our arrival. Our host venue, Taufua Beach Resort, together with APS Samoa, provided outstanding hospitality. This helped to ensure the success of our field clinic across five villages – A'ufaga, Lotofaga, Lalomanu, Lotopu'e and Saleaumua.

Despite very hot, humid conditions, tropical storms and a last minute venue change on Monday, the clinic was a huge success. Over the course of the week, we were able to treat 206 animals.

Thanks to APS for working with us to achieve such a great outcome.



## SAVAI'I

1-5 SEPTEMBER 2025

Clinic value: \$NZ190,000

Animals treated: 308

This outreach was split between Savai'i and Upolu, which made for a very hectic week for both our team and Animal Protection Society (APS) Samoa. Over five days, the team performed 190 surgeries and treated another 118 animals. The teams' veterinary work was skilled and all members of our group demonstrated a high level of care and professionalism in relation to their work.

On our final night in Apia, the APS Board hosted us at a local restaurant - a warm gesture and a welcome end to a very successful week in field.





## TONGATAPU

12-16 MAY, 18-22 AUGUST, 20-24 OCTOBER  
AND 1-5 DECEMBER 2025

**Clinic value: \$765,000**

**Animals treated: 1,885**

SPAW has been the prominent veterinary service to Tonga for 15 years and this remains our core focus for impact in 2026.

2025 saw SPAW resource four field visits to Tongatapu. We work closely with the Ministry of Agriculture, Food and Forests (MAFF) team and the local Tonga Animal Welfare Society (TAWS) to deliver a planned programme aimed at reducing roaming dog populations, ensuring higher levels of health and wellbeing in the island nation's animals, and in humane education. A total of 28 veterinary and vet nurse volunteers ensured nearly 2,000 animals received veterinary care. Thanks to MAFF and TAWS for working with us to achieve such a great outcome.



## VAVA'U

27 OCTOBER-1 NOVEMBER 2025

**Clinic value: NZ\$209,000**

**Animals treated: 289**

Our team treated 289 animals during this field clinic. It was an outstanding week with a record number of animals receiving veterinary care since we began working on Vava'u.

Thanks to Host a Vet for working with us once again for the betterment of local animals.





# TELE-VETERINARY MEDICINE

Dr Geoff Neal manages a significant caseload of animal health concerns every week through email and telephone support. This tele-veterinary service exists solely because of Geoff's generosity and his commitment to the animals and communities of Tongatapu and Vava'u.

Throughout 2025, Geoff provided ongoing remote care for a large number of patients, responding to an estimated 300 emails and phone calls. Working closely with our on island partners, he ensured that appropriate medicines, treatment plans and practical advice were delivered within the resources available.

The value of this service to Tonga is substantial – representing not only the cost of veterinary expertise, but the continuity of care for animals who would otherwise have no access to professional support.

---

## MAFF AND SPAW COLLABORATION

SPAW has worked alongside the Ministry of Agriculture, Food and Forests (MAFF) Livestock Officers in the Kingdom of Tonga for more than 15 years. During each clinic, MAFF staff gain exposure to skills, techniques and casework through direct collaboration with our volunteer veterinarians and vet nurses. This practical, hands-on approach has had a clear and lasting impact - building confidence, improving recognition of common medical conditions and strengthening MAFF's capacity to support animal welfare within their communities.

In turn, our volunteers benefit from opportunities to contribute at a level and scale they would not typically experience in their home countries, creating a mutually valuable partnership that continues to grow capability on both sides.





## FUNDRAISING AND PARTNERSHIPS

From the January to December 2025 period, revenue from fundraising and other contributions was **\$41,242** and we spent **\$50,190** running our programme.

While SPAW keeps operational costs to a minimum and utilises the generosity of multiple industry sponsors and donors, the cost of veterinary provisions has increased significantly in the past two years.

To reach the number of animals that we do, we cannot pay salaries. Every cent we raise goes directly to helping animals in need.

Each year SPAW receives a significant product donation from **Zoetis New Zealand**, a relationship we are proud to have fostered for 15 years.

We also receive generous gifts from our three Impact Partners. In addition, we estimate to have distributed more than \$100,000 during 2025 in medicines, pet food and veterinary provisions donated to us by industry supporters here in New Zealand, to multiple island partners. SPAW would

like to thank all of the wonderful people and organisations who generously supported us during 2025.

Please consider donating to us – we are always grateful for support.

---

## OUR PARTNERS IN 2025

**Animal Protection Society (APS) Samoa**

**Ministry of Agriculture, Food and Forests (MAFF) Tonga**

**Host a Vet Vava'u**

**Tonga Animal Welfare Society (TAWs)**

**Van Den Brink Family** IMPACT PARTNER

**Leslie Graney** IMPACT PARTNER

**Zoetis New Zealand** PREMIUM PARTNER

**The Angela Glover Fund**

## PRODUCT DONORS

AsureQuality NZ  
Julia Fisher, SVS, Hamilton  
Provet, Christchurch  
Provet, Auckland  
Ruby Neilson, Elanco NZ  
Sean Johnson, North Shore Vet Emergency  
& Critical Care, Auckland  
Stephanie Moule, Whangarei Hospital  
Zoetis New Zealand  
Jacqui Stevens, Norbrook New Zealand  
Peggy Hoo, Auckland  
Animates, Glen Innes, Auckland  
Balmoral Vets, Auckland  
Davinia Chambers, Franklin Vets, Pukekohe  
Ela McGilp, Auckland  
Far North Vets, Kaitaia  
Farm First & Pet First, Otorohanga  
Farm First & Pet First, Te Kuiti  
Farm First & Pet First, Taumarunui  
Hannah McInally, Remarkable Vets, Queenstown  
Holistic Vets, Tauranga

Howick Village Vet Clinic, Auckland  
Julie Muir, New Plymouth  
Kate Harder, Unitec, Auckland  
Katrina Lowe, Christchurch Afterhours Clinic  
Kim Telford, Auckland  
Lynfield Vets, Auckland  
Mariska Chalmers, Vet Care Tauranga  
Mill Road Vets, Whangarei  
9 Lives Orphanage, Auckland  
Pt Chevalier Vets, Auckland  
Rangiora Vets, Rangiora  
Royal Oak Vets, Auckland  
Sam Fergusson, VetCare Petone, Wellington  
Sam Miranda, Auckland  
St Lukes Vets, Auckland  
Susan Farquar, Vet Hospital Group, Orewa  
Tauranga Vets, Tauranga  
The Skin Vet, Auckland  
The Vets, Epsom, Auckland  
Vet Hospital Group, Remuera, Auckland  
Yael Schneider, VetOra, Taupo

## HEARTWARMING HIGH TEA FUNDRAISER IN TAURANGA



Dr Mariska Chalmers hosted a beautiful high tea fundraiser in Tauranga in June raising \$1,000 in support of SPAW's vital work.

A dedicated veterinarian and repeat SPAW volunteer, Mariska has served on missions in both Tongatapu and Vava'u – and she led the SPAW clinic on Tongatapu in August 2025. Her continued commitment, both in the field and at home, is deeply appreciated.

Guests enjoyed an afternoon of delicious treats, warm drinks, raffles and a lively quiz – bringing together friends, family and community supporters in a spirit of generosity. We're also deeply grateful to Holy Trinity Tauranga for donating the venue, and to everyone who contributed to the success of the day.

This event was a true reflection of the enduring kindness and collective support from our volunteers and their communities that keeps SPAW thriving.

# VOLUNTEER STORIES

---

## DR JIM GARVEN

**Veterinarian, Team Samoa 2025**

I have had the good fortune of being involved with SPAW in Tonga, 2024, and Samoa, 2025.

I am a Canadian trained veterinarian based in Ontario. SPAW offers opportunities for those interested in giving back to the wider animal loving population through carefully organised clinics in under serviced villages throughout the South Pacific. Being part of one of those teams is an opportunity to engage with like-minded folks looking to impact animal overpopulation in the region. You are blessed to stand on the shoulders of the giants who have gone before you and the many, many people both at the administrative level (accommodations, flights, etc) and the dedicated boots on the ground warriors looking after your every need while on island. The unbridled gratitude is well demonstrated by locals who deeply appreciate our help.



## DR SARAH RUSIN

**Veterinarian, Team Vava'u 2025**

For me, the heart of the clinic experience was the people. From the moment I arrived, I felt part of an exceptional team – hardworking, easy-going and genuinely caring toward one another. The trip ran with a level of organisation that made it effortless to show up each day and give your best. At the centre of that smooth operation was Geoff, whose calm leadership, passion for veterinary medicine and unwavering commitment to SPAW set the tone for the entire week. His enthusiasm was contagious, turning the clinic into not just a place of work but a memorable and inspiring experience.

The Host a Vet team added another layer of support and connection. Their dedication to their community was evident in every detail, and their thoughtful organisation ensured each day unfolded with purpose and efficiency. Their presence made the work feel grounded in something bigger - a shared commitment to improving animal welfare across the islands.

The first day at Tokomololo brought the steepest learning curve. Arriving mid-afternoon to join an already established team meant quickly adapting to unfamiliar systems and rhythms. Yet that challenge became a turning point; once the team found their footing, the days that followed felt smoother and more intuitive. Adjusting to different animal welfare standards also required a shift in perspective, but understanding the realities of a community without a resident veterinarian offered valuable insight and deepened the sense of purpose behind the work.

As the week came to a close, I had an overwhelming feeling of gratitude for such an amazing experience.

## FAREWELL OXY

In 2011, a little abandoned puppy took a tumble from a veranda in Vava'u and broke his leg. Fortunately, a small volunteer team of vets and vet nurses from SPAW were on the island at the time and were able to help.

Oxy, as the puppy was to become known as, was adopted by expat locals Paul and Karen, who gave him a loving home and attended to his care. Oxy's leg healed well and he went on to enjoy his years in Vava'u with his adopted family. This family also included Oxy's canine family members – Niki, Nuke and Loki – with whom he would play with.

His bold personality and big voice were always present. As he aged the personality remained, but arthritis began to take a toll on Oxy's mobility. Oxy's family managed his aging and mobility issues with care and medications from SPAW to keep him as happy and as mobile as he could be.

Oxy was a regular attendee when our SPAW teams visited Vava'u and he was well known to many of our volunteers.



In November 2025, after the SPAW Vava'u clinic had wound up, Oxy had his final SPAW visit. A house call provided by one of the SPAW vets, where at the age of 14, Oxy was able to peacefully pass away, surrounded by the people who had loved him for his lifetime.

Rest in love, Oxy. Your story is a reminder of why SPAW exists – and the positive difference we can make to an animal's life in remote island locations.



## A SPECIAL PATIENT

A local Tongan family in Vava'u reached out to Host a Vet, worried about their cow who had given birth only days earlier and could no longer stand.

Geoff from SPAW happened to be on the island, and with the Host a Vet team, he and his partner Rebecca travelled out to a small remote farm. It didn't take long for Dr Geoff and Dr Rebecca to diagnose Down Cow Syndrome - a metabolic condition that can strike after calving, draining a cow's strength until even standing becomes impossible.

The team moved quickly. Medications were administered, but they knew medicine alone wouldn't save her. Laying on the ground had left her muscles weak and her body sore. So together – SPAW, Host a Vet volunteers and the family - began the slow, careful work of lifting her, supporting her weight. Dr Rebecca knelt beside her, massaging stiff muscles and tending to the sores that had formed from lying too long in one place.

This case had a positive outcome because veterinary expertise was present. Both SPAW and Host a Vet ensured the animal received the appropriate care to enable her to feed and nurture her calf without pain or suffering.



## A SECOND CHANCE ON THREE LEGS

In August, the SPAW team performed a life-changing leg amputation for a local dog in need. At his post-operative check, he had gained 2kg – a clear sign that he was finally free from the pain that had suppressed his appetite for so long.

Now, he's embracing a pain free life with regular check ups and access to ongoing care.

In New Zealand, this surgery would typically cost the owner around \$2,000. But thanks to SPAW's charitable mission, no animal is turned away due to cost. This is the power of veterinary care delivered with compassion, where remote communities and their animals receive the help they need, regardless of their ability to pay.

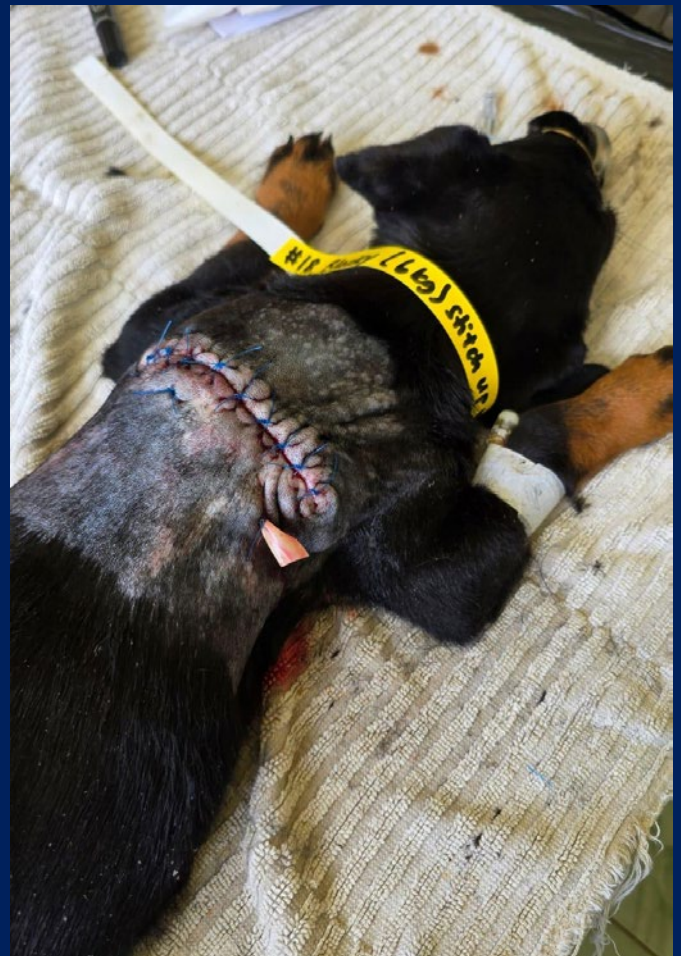
## A STORY OF CARE, COMMITMENT AND HEALING

A young pup had developed a large abscess on its back, requiring daily treatment from the Ministry of Agriculture, Food and Forests (MAFF) team. The puppy's Tongan owner showed remarkable dedication, bringing his beloved dog to the MAFF Tokomololo clinic each day – often relying on friends or family for transport, as he didn't drive himself.

By the time the SPAW team arrived on island, the wound had begun forming healthy granulation tissue – a crucial step in the healing process. With that progress, the SPAW team was able to surgically close the wound. A few days later, the puppy returned for drain removal, and the repair was holding strong. There was cautious optimism.

After attentive care from both MAFF and SPAW, the wound fully healed. The sutures are out, no further surgeries are needed, and this resilient pup is back on its feet.

What a result – and what a testament to teamwork, trust and the power of community care.





## OUR PEOPLE IN 2025

**Thank you to these amazing veterinarians, vet nurses and admin volunteers who gifted 2,895 professional hours to run our programme.**

**Veterinarians** Cathy Pollock, Geoff Neal, Victoria Chapman, Oliver Walkinton, Phoebe Ellis, Brechtsje Tacoma, Mariska Chalmers, Helga Campbell, Linka van Heerden, Diane Fraser, Yael Schneider, Felicity Keenan, Jim Garven, Helena Tran, Olivia Hunter, Sarah Rusin, Nick Pallin, Kyleah Traber and Sam Lewis.

**Vet Nurses** Hannah McNally, Kathrin Maurer, Kimberley Linthwaite, Akiko Shimoda, Loni Gillespie, Nicole Doriguzzi, Teigan Brennan, Tiaan Tamahaga, Belinda Battersby, Fiona Wallis, Molly Lines, Sian Manning, Michelle Schimanski, Eleanor McGilp, Sarah McCulloch, Larissa Mckechie, Wendy Richardson, Bubbles Otway, Kate Harder, Katrina Lowe, Margie Rutherford and Hannah Gilmour.

**Thank you to our local partners and volunteers who continue to inspire us with their tenacity to bring positive change to the animals in their communities.**

**TONGATAPU** Deb Allan, James Glover, Sal Fineanganofu, Ela Burke, Mhirron French, Jade Hackney, Charles Kato, and MAFF team members Nesi, Mafua, Pua, 'Ana, Miu, Didi, and Hapi.

**VAVA'U** Bodine Morey, Tracey Meikle, Selalina Prescott and MAFF team member Lua.

**SAMOA** Tino Tuionetoa, Leisha Ah-Sang and Joan McFarlane.

# OUR TRUSTEES IN 2025



## **AROHA FLEMING** **Marketing and Communications Lead**

As Marketing and Communications Lead, my role in SPAW is to help tell our story. We do this mainly through

the voice of our amazing volunteers, who share their experiences in our Impact Reports, website stories, newsletters and on social media. In 2025, SPAW featured in media including the Bay of Plenty Times, NZME channels and Breakfast Television.

We complete Impact Reports after each clinic, documenting the outcomes achieved including the number of consultations, desexing cases, surgeries, parasite treatments and more.

Our goal is also to raise awareness, which helps spread the word to the volunteers, supporters, donors and partners. Without their support, the incredible outcomes achieved on island would not be possible.



## **DR GEOFF NEAL** **Veterinary Lead**

My involvement with SPAW began 13 years ago, when I first volunteered in Tongatapu with the Unitec team.

What started as a single field clinic evolved into a deep and ongoing commitment to the organisation. Over time I joined the Board, and eventually stepped into the role of Chair - a natural progression shaped by years of hands-on experience and strong relationships across the Pacific.

Today, I work closely with our Board and team leaders to deliver a veterinary programme that is consistent, high quality, and grounded in genuine partnership. I also nurture our on island relationships, spending significant time in the region each year and managing our tele-vet programme to ensure continuity of care between clinics.

SPAW's mission is something I am deeply dedicated to; there is rarely a day without contact from a stakeholder, partner or volunteer. Serving as Chair is a privilege, and I am continually inspired by the high-performing, highly skilled team that drives SPAW's work forward year after year.



## **GLENDA GOUWS** **Volunteer Programme Lead**

My involvement with SPAW began through volunteering on clinics in Tonga and Fiji. Working alongside

island communities grounded me in the true, back to basics essence of veterinary care, where every skill matters and every resource is precious. The gratitude and commitment of local pet owners, often with very limited means, continues to reinforce why our work is so important.

At 46 I had made the decision to train as a Veterinary Nurse, motivated by a strong conviction that I could no longer stand by while animals lacked the care they deserved. And in 2017, while working in veterinary practice I took on the volunteer role of SPAW Programme Administrator before joining the SPAW Board. Coordinating clinics, supporting volunteers, and helping teams deliver essential care has shown me the power of shared purpose and the impact we can achieve together.

Each outreach reaffirms my commitment to advocating for animals and supporting the communities that care for them. It is a privilege to contribute to SPAW's mission and to play a part in work that continues to make a meaningful difference across the Pacific.



## **KAREN SCHADE** **Funding, Partnerships and Education Lead**

My role with SPAW has evolved over many years, and at various points

I've worn almost every hat the organisation has needed. Now, as we enter our sixteenth year with an experienced and capable Board, my focus is firmly on keeping our charity sustainably funded, strengthening the partnerships that underpin our work while also ensuring humane education remains woven through everything we do.

Having founded SPAW, my connection to the organisation is deeply personal and life long. I cannot imagine a South Pacific where New Zealand does not play a meaningful role in supporting animal welfare. Maintaining strong relationships with funders, keeping our partners informed and

engaged, and ensuring they feel part of our mission is essential to that vision.

Equally important is our commitment to education – working alongside our on island stakeholders, sharing knowledge and demonstrating best practice through action. This approach continues to build capability, confidence and long-term change within the communities we serve.

## LILIAN LAWRENCE



### Governance Lead

As Governance Lead, my role in SPAW is to guide strategic planning and ensure the Board monitors progress against our goals and objectives, supported by the right governance processes such as policies, Memorandums of Understanding and Board secretariat functions. Our 2025 – 2027 Strategic Plan sets out SPAW's long-term vision, mission and objectives, outlining the actions and resources needed to achieve them. It provides a shared direction for the Board and supports effective, adaptable decision-making.

Over the past year, we have held virtual meetings every two months and one face-to-face meeting to review key decisions and assess SPAW's performance against the plan. The Board remains actively engaged in driving our objectives and strengthening our service offerings. During our in-person meeting, we focused on the key activities required in 2026 to advance our strategic goals, explore opportunities to evolve our services and ensure we have the skills and capabilities needed now and into the future to achieve our mission.



## DR VICTORIA CHAPMAN

### Trustee

My journey with SPAW began in 2016 when I first volunteered thanks to a fellow colleague from Zoetis, Steven

Stevenson. He encouraged me to join after being inspired by fellow Zoetis vet, Andy David. Since then, I've volunteered every year, except during the COVID years when travel was off the table. By May 2025, I had completed my seventh trip and led a fantastic team for the sixth time.

I volunteer for SPAW because I can see we are making a tangible difference for animals and their owners. Over the past decade, I've seen a steady rise in animal welfare. More locals are bringing pets to clinics, and the dogs are healthier, better nourished, and more cared for. It's a gradual shift, but it is happening.

As a Trustee, I support the volunteer admin team in communications, advocate for SPAW's work within my networks and lead a trip to the islands every year. I'm very grateful to the amazing volunteer nurses and vets I've worked with, the SPAW Board for their tireless efforts, and Zoetis for their continued sponsorship. It's a true team effort, which is making a difference.

# THE YEAR AHEAD

2026 will be a busy year with seven field clinics scheduled. The year starts with a May clinic in Tongatapu followed closely by our third annual clinic to the southern region of Upolu, Samoa, in June. We then have three field clinics planned to Tongatapu in August, October and December, one clinic to Savai'i in September and one clinic to Vava'u in late October. These trips will require recruitment of around 55 veterinary and vet nurse placements from around the globe and we have a target to provide free veterinary care to more than 2,500 animals.



# CELEBRATING 15 YEARS

As we mark 15 years of SPAW, we honour the extraordinary volunteers who have shaped our organisation since our beginnings in 2010. These faces represent just a fraction of the many generous individuals who have given their time, skill and heart to our mission. They are the soul of SPAW, and our work across the Pacific is possible because of them.

Our journey has also been made possible thanks to the generosity of hundreds of individuals and businesses – those who have gifted product, pet food, clinical supplies, hospital goods, event volunteers who have spent hours organising fundraising events, and our on island supporters and partners.

Our charity is actively improving the lives of thousands of animals thanks to each of you.



# HONORARY LIFETIME VOLUNTEERS 2025

To mark our 15th anniversary, in 2025 we proudly acknowledge the extraordinary contributions of nine remarkable individuals.

Each of these volunteers has given 10 or more consecutive years of service, completed 10 SPAW field trips, or – in some cases – have achieved both. Their commitment is truly exceptional. We thank them wholeheartedly and recognise their service with an official SPAW T-shirt.

We will continue awarding this distinction with current volunteers as their service reaches the same criteria.



**Akiko  
Shimoda**



**Dr Geoff  
Neal**



**Karen  
Schade**



**Kate  
Harder**



**Dr Kim  
Telford**



**Laura  
Harvey**



**Lauren  
Prior**



**Louise  
van Den Brink**



**Dr Rebecca  
Ladyman**

# HOW YOU CAN HELP

**SPAW receives no government funding and relies on the goodwill of our supporters to resource our vital work in the South Pacific. Because you care, we know our work is not in vain and we can continue to save lives in the years ahead.**

- ✓ Donate directly to our Give a Little page: **'South Pacific Animal Welfare - Givealittle'**
- ✓ Make an online donation: **[www.spaw.org.nz/donate](http://www.spaw.org.nz/donate)**  
South Pacific Animal Welfare  
**06-03-0195-0679497-000**
- ✓ Leave us a gift in your will
- ✓ Host a fundraising event in your home or workplace
- ✓ Donate your drugs and veterinary supplies
- ✓ Follow us on social media  
Facebook **South Pacific Animal Welfare**  
Instagram **@spawvets**



## CONTACT US

Volunteering: Glenda, [volunteer@spaw.org.nz](mailto:volunteer@spaw.org.nz)  
General: Karen, [enquiries@spaw.org.nz](mailto:enquiries@spaw.org.nz) • +64 27 527 3642  
Veterinary: Geoff, [vet@spaw.org.nz](mailto:vet@spaw.org.nz)  
Media: Aroha, [communications@spaw.org.nz](mailto:communications@spaw.org.nz)

[www.spaw.org.nz](http://www.spaw.org.nz)

