



IMPACT REPORT

SPAW Samoa
27 – 31 May 2024

OUR TEAM



Team Lead:
Dr Victoria Chapman



Dr Fiona Spence

VETS



Dr Laura Nettleton



Dr Lauren Prouting



Akiko Shimoda

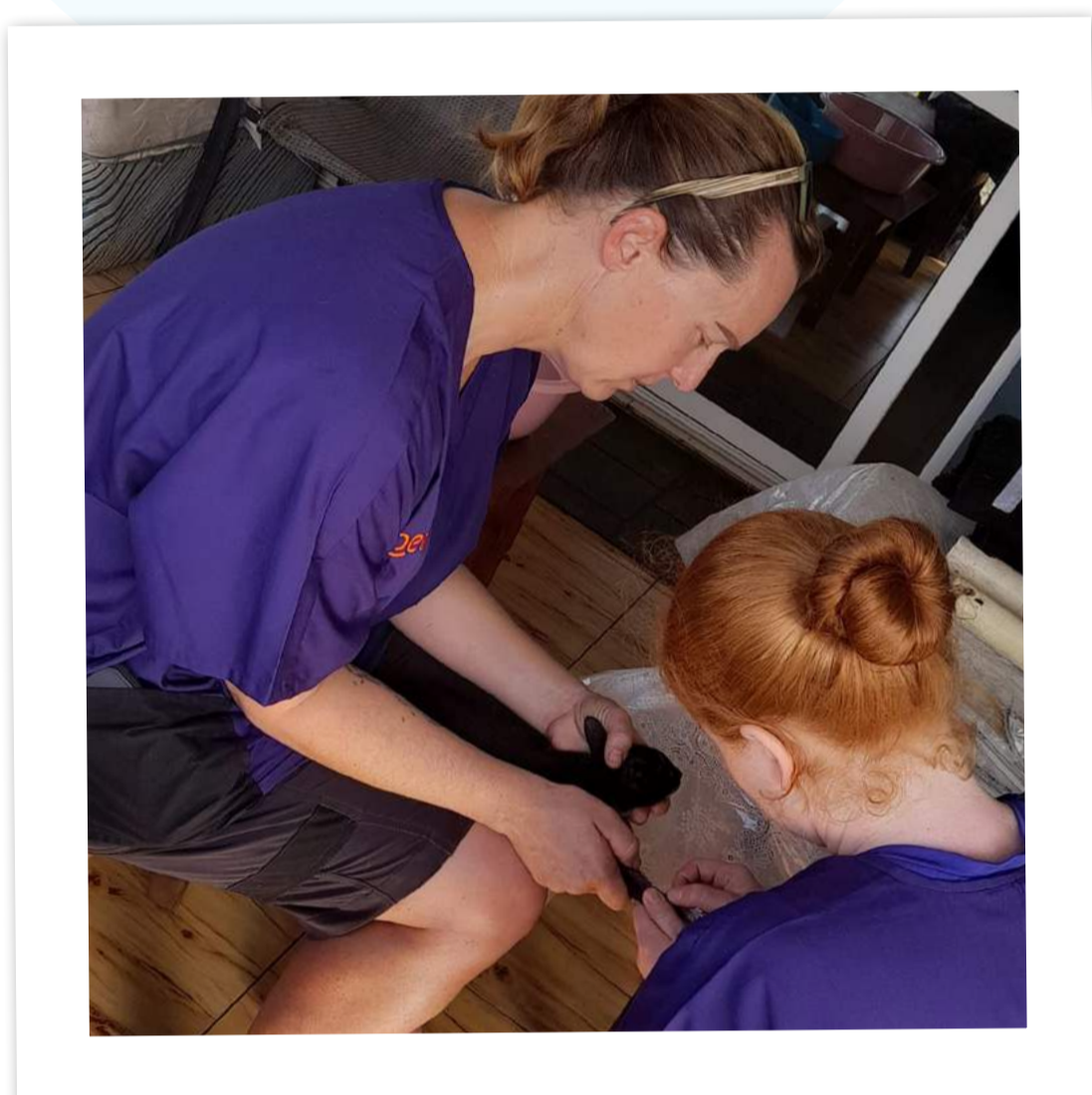


Wendy Richardson

VET NURSES



Sian Manning



CLINIC OUTCOMES

Clinic hours	45.5	Dogs desexed	96
Veterinary hours	182	Dog consultations	18
Veterinary nurse hours	182	Cats desexed	26
Parvovirus vaccines	110	Cat consultations	5
Parasite treatments	225		

Total Animals Treated: 145

CLINIC VALUE NZ\$183,000

The calculation is based on SPAW costs, donated products, administrative expenses, and professional services. While SPAW does not charge for services, donations are welcomed.



VOLUNTEER FEEDBACK

"Having participated in several SPAW trips, my first visit to Samoa was a new experience. I had some expectations about what I was getting into, though I was uncertain about the facilities we would have in Samoa. I anticipated they would be quite basic since we were visiting various villages, but I was sure that we would have all the necessary resources to accomplish our work.

The other volunteers you encounter on these trips are usually wonderful, and the locals are immensely appreciative of the services we offer. One of the highlights was that our accommodation was situated directly on the beach, allowing us, time permitting, to enjoy a refreshing swim in the sea and we came home to a cooked resort meal every night – a luxury you don't always get on other trips.

If you're considering volunteering, I urge you to go for it. Fieldwork is a remarkable experience, and the rewards you receive are far beyond what you might expect."

Laura Nettleton, Veterinarian, Timaru Veterinary Centre

"This marks my fourth journey volunteering with SPAW, having visited Tonga twice and now Samoa for a second time. I adore it. The experience is enjoyable, yet it can also be overwhelming, heart-wrenching, and demanding. However, the individuals you encounter, the camaraderie felt, the animals assisted, the community support, and the shared drive for animal welfare surpass the sweat and tears shed on these expeditions.

On a beach stroll before breakfast, two dogs accompanied me. They were incredibly endearing. The male we named Danny, as he was constantly with Sandy—a female dog we had named and spayed earlier—so it was reminiscent to us of the two main 'Grease' characters; and Hoppy, who was injured and walked on three legs.

Danny and Hoppy were desexed as well, giving these free-roaming dogs a renewed hope. Their existence is far from perfect, but at least they won't reproduce or have to care for unwanted pups, making their lives simpler since they only need to fend for themselves.

No matter where you find yourself in life, find your peace, be content and be kind. I highly recommend volunteering with SPAW."

Wendy Richardson, Veterinary Nurse, Katikati Vets

WORD FROM OUR FOUNDER

A team comprising four veterinarians and three veterinary nurses was recruited to conduct our second field clinic in 2024. This time, we ventured to Samoa to collaborate with the Animal Protection Society of Samoa (APS). SPAW and APS had been planning this trip for six months, agreeing that SPAW's support would be most beneficial in a remote location seldom visited by vets.

The team travelled from different regions of New Zealand to board their early morning four-hour flight from Auckland to Upolu. Greeted warmly by the APS team, they transferred the clinic's supplies and their personal belongings into a shuttle for the two-hour journey to Lalomanu, which would be their home for the week.

Victoria Chapman, a trustee of SPAW who lead the May expedition, reported that the team dedicated long hours, moving to a different village each day. "With days often extending to 10 hours, the team worked with diligence, motivated by the substantial need. Although hesitant to depart with much left to achieve, we were grateful for the chance to offer veterinary care to animals in the villages of Lalomanu, Ulutogia, Malaela, Saleaumua, To Sua, and Lotofaga—care that these deserving animals would otherwise not have received."

Joan, Tino and Leisha from APS, along with numerous locals, were tremendously supportive. The community's involvement, including providing meals and organizing a visit to the To Sua Trench, was a trip highlight. The staff at Taufua Resort, where the team stayed, took excellent care of them, supplying daily lunches and evening meals – a welcomed gesture after long clinic days.

We extend our gratitude to our volunteers, APS Samoa, Taufua Resort, and our Premium Partner Zoetis NZ, and the multitude of businesses and individuals who made this clinic possible.

