



MID-YEAR REPORT

July 2017



2017 has been a year for growth and learning for SPAW which is very appropriate for an organisation committed to improving the lives of Pacific Island animals while offering veterinarians and vet nurses from New Zealand, and around the world, an opportunity to grow their personal and professional skills while giving back to our South Pacific Island neighbours.

Our goal is to run sustainable veterinary care projects across islands in the South Pacific and since 2010 SPAW has introduced our programme to Tonga, Vava'u, Niue, Samoa, Fiji and Rarotonga working at varying levels dependent on need. We continue to offer veterinary services that provide local agencies the chance to grow, and to assist where we can provide the most value. More often than not, island budgets do not extend to small animal care, and even large animal care is challenging due to resources and infrastructure. SPAW therefore provides a very necessary support service that enhances those efforts already in place.

A successful first half of 2017

During our first 3 clinics of the year, to Tongatapu, Fiji and Vava'u in the first half of 2017, SPAW has provided veterinary care to **575 animals** including **320 de-sexing surgeries**, we have **vaccinated 335** dogs from the deadly parvovirus, and our volunteers have gifted **843 on-island volunteer hours** to the programme. We have also administered **496 flea and worm treatments** to dogs and cats. Our visiting teams have treated a wide variety of animals including dogs, cats, pigs, horses and goats and our formula of visiting villages enables us to reach animals who would be restricted due to transportation or awareness issues.

Our efforts also extend to humane euthanasia, pig and horse castrates and we have happily treated turtles, sea birds and even chickens from time to time.

As we look to the future, SPAW hopes to focus on projects that will make a tangible and long term positive impact on the roaming canine populations on South Pacific Islands as well as continuing to inspire empathy to the health and well-being of all Pacific Island Animals by being regularly present in their communities.

We thank everyone, individuals and businesses who help us achieve our goal of all **South Pacific Islands having access to veterinary care.**

Kind Regards,

Karen Schade
Executive Officer



DONATE

Please consider a donation to SPAW

Bank account: South Pacific Animal Welfare
03 0195 0679497 00

givealittle.co.nz/org/spawnz

givealittle
from the Spark Foundation

Or email us for an invoice enquiries@spaw.org.nz

VOLUNTEER

To register as a volunteer email

volunteer@spaw.org.nz

You will receive our 2018 trips calendar via email in December!

Our key philosophies include:

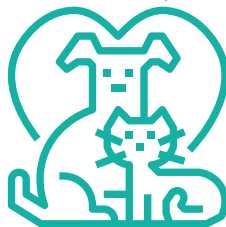
- Making veterinary care accessible to South Pacific Island Communities
- Foster long term and sustainable change to the health and well-being of animals living in island communities by being regularly present
- Work collaboratively with local agencies and governments as a conduit to delivering veterinary care to these communities
- Encourage and promote the benefits of spaying and neutering across all of our programmes
- Promote a respect for and encourage learning about Pacific Island cultures within our organisation and programme



2017 CLINIC STATISTICS

259 CANINE SPAY OR
NEUTER SURGERIES

61 FELINE SPAY OR
NEUTER SURGERIES



45 OTHER SURGERIES

204 VETERINARY
CONSULTATIONS

6 ANIMALS HUMANELY
EUTHANASED



335 VACCINATIONS AGAINST THE DEADLY PARVOVIRUS

496 FLEA AND WORM TREATMENTS



18 VET & VET NURSE VOLUNTEERS
843 VOLUNTEER HOURS
17 DAYS OF FIELD WORK



OVER \$150,000
VALUE IN AID



COMING UP IN 2017: Tongatapu 14th-18th August and 4th-8th December

South Pacific Animal Welfare,
140 Omaha Valley Road, Matakana, RD5, Warkworth 0985
027 527 3642 | www.spaw.org.nz
Registered Charity CC46408

zoetis

MAJOR PARTNER